

SWISS – ROMANIAN Cooperation Programme



International Research
Cooperation Programme

CHF 13 million



Overall objective: a better internationalization of Romania's research community, thanks to the new Swiss and Romanian bilateral cooperation opportunities that will be created



Implementation period: 2025 - 2029

PROGRAMME OPERATOR

National Authority for Research
(under the Romanian Ministry of
Education & Research)

PROGRAMME COMPONENT OPERATORS

-Swiss National Science Foundation
- Horia Hulubei National Institute of
Physics and Nuclear Engineering

SWISS & ROMANIAN PARTNERS

-Paul Scherrer Institute (Switzerland)
-Executive Agency for Higher
Education, Research, Development and
Innovation Funding (UEFISCDI), under
the Romanian Ministry of Education &
Research



SPECIFIC OBJECTIVE OF THE SECOND SWISS CONTRIBUTION:

PROMOTING ECONOMIC GROWTH
AND SOCIAL DIALOGUE, REDUCING
(YOUTH) UNEMPLOYMENT

THEMATIC AREA
Research & Innovation

TOTAL BUDGET

CHF 15'294'118 (CHF 13 M Swiss funds
and CHF 2'294'118 Romanian co-
financing)



The National Coordination Unit (Romanian Ministry of Finance) ensures the overall coordination of the 11 Programmes financed by the second Swiss Contribution to Romania

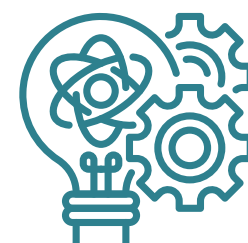
The Swiss Contribution Office, integrated to the Embassy of Switzerland in Romania, ensures smooth communication between the actors in the two countries and supports both programming and implementation of the 11 programmes



The Swiss Agency for Development and Cooperation is financing the International Research Cooperation Programme in Romania



INTERNATIONAL RESEARCH COOPERATION PROGRAMME COMPONENTS:

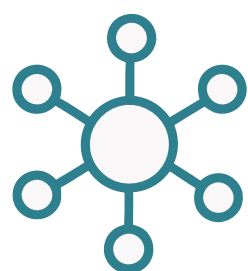


1

This specific component includes the Multilateral Academic Projects (MAPS), considered as a funding instrument, through which researchers in Switzerland and their counterparts in Bulgaria, Croatia, Poland, Romania, and Hungary implement joint multilateral research projects of common interest. The MAPS competition has been organized by the Swiss National Science Foundation (SNSF), acting as Program Component Operator, together with the Romanian Executive Agency for Higher Education, Research, Development and Innovation Funding (UEFISCDI), as partner in this component.
20 research projects are involving Romanian partners.

2

The second component contributes to the Extreme Light Infrastructure (ELI-NP) towards the advancement of laser-driven fundamental nuclear physics studies and applications, in close collaboration with the Swiss partner represented by the Paul Scherrer Institute. This component is under the responsibility of the “Horia Hulubei” National Institute of Physics and Nuclear Engineering.



To keep up to date with the International Research Cooperation Programme, as well as the Swiss-Romanian Cooperation Programme, you can find information on:

- **National Coordination Unit** 
- **Embassy of Switzerland in Romania**    
- **National Authority for Research**   
- **Executive Agency for Higher Education, Research, Development and Innovation Funding**      YouTube



National Coordination Unit
Ministry of Finance
16, Bulevardul Libertății
050706 Bucharest
swiss.contribution@mfinante.gov.ro



Swiss Contribution Office
Embassy of Switzerland in Romania
Grigore Alexandrescu Str. 16-20, 4th Floor
010626 Bucharest
E-mail: bucharest.sco@eda.admin.ch

